

UPDATE 2: ACTIVE FIRE LOCATIONS FOR TSKHINVALI, SOUTH OSSETIA, GEORGIA

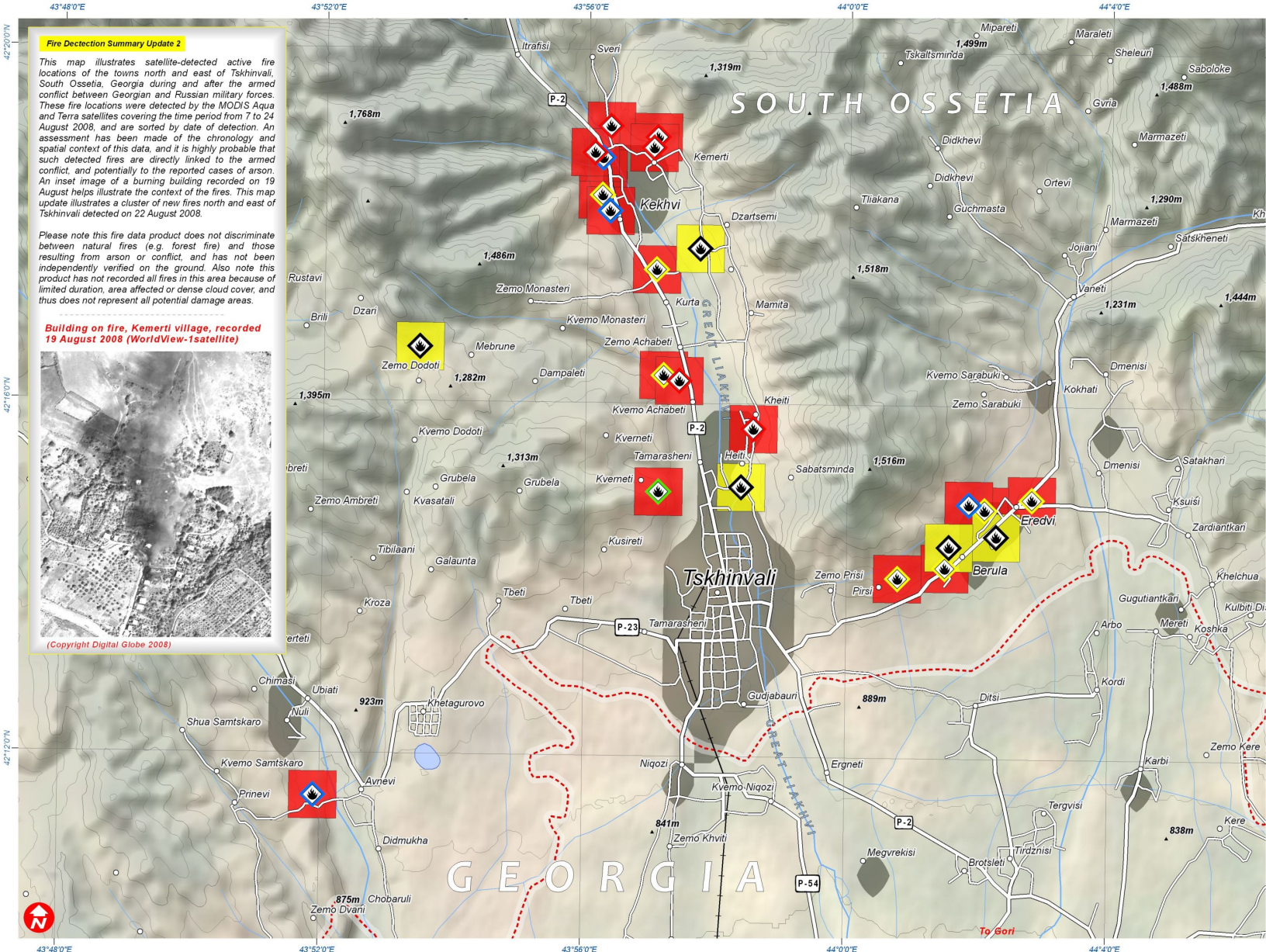
ACTIVE FIRE LOCATIONS
DETECTED WITH MODIS
(7 - 24 AUGUST 2008)

Fire & Armed Conflict 24 August 2008



Version 1.2

UNOSAT-2008-000144



Fire Detection Summary Update 2

This map illustrates satellite-detected active fire locations of the towns north and east of Tskhinvali, South Ossetia, Georgia during and after the armed conflict between Georgian and Russian military forces. These fire locations were detected by the MODIS Aqua and Terra satellites covering the time period from 7 to 24 August 2008, and are sorted by date of detection. An assessment has been made of the chronology and spatial context of this data, and it is highly probable that such detected fires are directly linked to the armed conflict, and potentially to the reported cases of arson. An inset image of a burning building recorded on 19 August helps illustrate the context of the fires. This map update illustrates a cluster of new fires north and east of Tskhinvali detected on 22 August 2008.

Please note this fire data product does not discriminate between natural fires (e.g. forest fire) and those resulting from arson or conflict, and has not been independently verified on the ground. Also note this product has not recorded all fires in this area because of limited duration, area affected or dense cloud cover, and thus does not represent all potential damage areas.

Building on fire, Kemerti village, recorded 19 August 2008 (WorldView-1satellite)



(Copyright Digital Globe 2008)



Map Legend

Population	Administrative
★ Capital	— International Border
○ Town / Village Border
○ Village South Ossetia
 Approximate
 Boundary
Urban Areas	Elevation
Urban / Built-up Area	▲ Spot Height (m)
..... Contour (50m) Contour (50m)
Transport Lines	Water Bodies
— Main Road	— River Line
— Secondary Road	○ Lake
— Railroad	

Active Fires by Date

▲ 10 Aug 2008	▲ 19 Aug 2008
▲ 12 Aug 2008	▲ 22 Aug 2008
▲ 13 Aug 2008	
▲ 17 Aug 2008	

Active Fires sorted by detection date

Active Fires by Location

Active fire detected within 1km2 area of MODIS satellite pixel	MODIS Pixel Area with Detected Fire
MODIS Pixel Area with Detected Fire	MODIS Pixel Area with Detected Fire (NEW-UPDATE LOCATIONS)

Map Scale for A3: 1:80,000

Fire Data MODIS Aqua - Terra (NASA)
Fire Processing U. of Maryland, NASA
Fire Dates 7 - 24 August 2008
Analysis UNOSAT
Elevation Data SRTM-NASA
GIS Data USGS, UNEP, UNOSAT
Map Production UNOSAT (25 August 2008)
Projection Pulkovo 1995 GK Zone 8N
Datum Pulkovo 1995

The depiction and use of boundaries, geographic names and related data shown here are not warranted to be error-free nor do they imply official endorsement or acceptance by the United Nations. This map was produced by the United Nations Institute for Training and Research (UNITAR) Operational Satellite Applications Program (UNOSAT). UNOSAT provides satellite imagery & related geographic information to UN humanitarian & development agencies & their implementing partners.

UNOSAT

satellite solutions for all

Contact Information: info@unosat.org
24/7 Hotline: +41 76 487 4998
www.unosat.org